

EATON

STC EZ-Torque Connectors

Capabilities Brochure



STC EZ-Torque...

...for the innovator in you



STC® EZ-Torque from Eaton

Eliminate the need for port adapters without sacrificing performance.

The EZ-Torque connector is your solution to simplifying your hydraulic design and assembly. EZ-Torque combines the advantages of both threaded and threadless connectors - providing efficient assembly, while maintaining the ability to orient phase angles and handle vibration.



Patents Pending.

Features

- Connects directly to a standard threaded port
- Eliminates port adapters
- "EZ-Torque" installation
- Fewer operator-dependent leak paths
- Lock down / Anti-rotation design
- Reduced hose fitting installation time

Benefits

- Easy to incorporate, no custom ports required
- Fewer total parts, no adapter installation time
- Allows for quick and easy install, ergonomically-friendly
- Reduced system leaks and warranty claims
- Orient connection with proper phase angles; handles vibration and side loads
- Increased throughput and productivity

Markets

- Agriculture
- Construction
- Forestry
- Transportation
- Lawn & Turf Care
- Utility

Applications

- Tractors
- Loaders
- Engines
- Snow Plows
- Heavy Truck
- Crawlers
- Paving Equipment
- Mowers
- Forklift
- Utility Lift Vehicles





Specifications

SIZE	OPERATING PRESSURE		BURST PRESSURE		VACUUM		TORQUE	
	bar	psi	bar	psi	mm/Hg	in/Hg	N-m	ft-lbs
-06	345	5,000	1,379	20,000	711	28	31-33	23-24
-08	293	4,250	1,172	17,000	711	28	54-58	40-43
-10	250	3,625	1,000	14,500	711	28	65-72	48-53
-12	215	3,125	862	12,500	711	28	117-127	86-94
-16	209	3,025	834	12,100	711	28	224-237	165-175

Available Port Configurations

HOSE SIZE	SAE ORB			ISO 6149			BSP FORM E			METRIC FORM E		
	Port Size	Thread (in)	Hex (mm)	Port Size	Thread	Hex (mm)	Port Size	Thread	Hex (mm)	Port Size	Thread	Hex (mm)
-06	-06	9/16-18	19	14	M14x1.5	19	-04	G 1/4-19	19	14	M14x1.5	19
-08	-08	3/4-16	24	18	M18x1.5	24	-06	G 3/8-19	24	18	M18x1.5	24
-10	-10	7/8-14	30	22	M22x1.5	30	-08	G 1/2-14	30	22	M22x1.5	30
-12	-12	1-1/16-12	36	27	M27x2	36	-12	G 3/4-14	36	27	M27x2	36
-16	-16	1-5/16-12	41	33	M33x2	41	-16	G 1-11	41	33	M33x2	41

Assembly Instructions

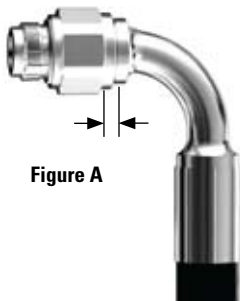


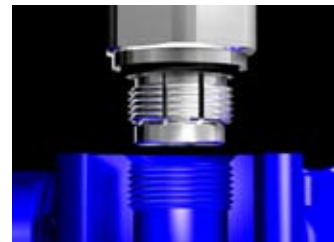
Figure A

Before assembly of STC EZ-Torque, one should:

1. Inspect the port for damage
2. Clean the port
3. Make sure that the nut is properly staged.

The nut is properly staged when there is approximately 1/16" between the nut and shoulder.

Refer to Figure A (at left).



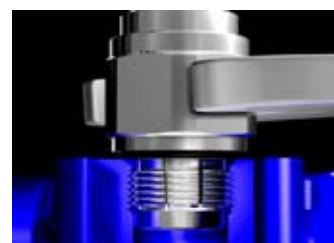
Step 1

Simply push the E-Z Torque connector into the standard component port so that the o-ring contacts the port face.



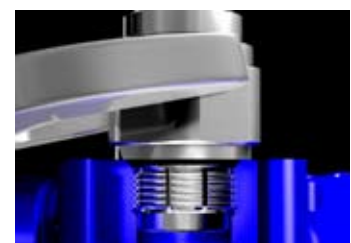
Step 2

Orient the connection to achieve proper orientation



Step 3

Apply torque to the nut hex as specified while holding the fitting fixed.



Step 4

To disconnect, simply unthread the nut similar to standard fittings until it bottoms out. Then pull the fitting straight out of the port.

Eaton
Hydraulics Operations USA
14615 Lone Oak Road
Eden Prairie, MN 55344
USA
Tel: 952-937-9800
Fax: 952-294-7722
www.hydraulics.eaton.com

Eaton
Hydraulics Operations Europe
Route de la Longeraie 7
1110 Morges
Switzerland
Tel: +41 (0) 21 811 4600
Fax: +41 (0) 21 811 4601

Eaton
Hydraulics Operations Asia Pacific
11th Floor Hong Kong New World Tower
300 Huaihai Zhong Road
Shanghai 200021
China
Tel: 86-21-6387-9988
Fax: 86-21-6335-3912

